

THE 
CROWN

IT BELONGS TO YOU

3 & 4 BHK DREAM APARTMENTS

THE LOCATION

IN CLOSE PROXIMITY TO-

- ▶ Hotel Radisson Blu, Hotel Jaipur Marriott
Hotel Bella Casa, Hotel Fern, Hotel Royal Orchid
Hotel Clarks Amer, Hotel The Lalit
- ▶ Fortis Hospital, EHCC, Jaipuria Hospital
Cocoon Hospital
- ▶ Gold Souk Mall, World Trade Park
Entertainment Paradise (EP), Genpact
- ▶ Jaipur International Airport





THE EXTERIOR: Bird Eye View



THE EXTERIOR: Main Entrance View

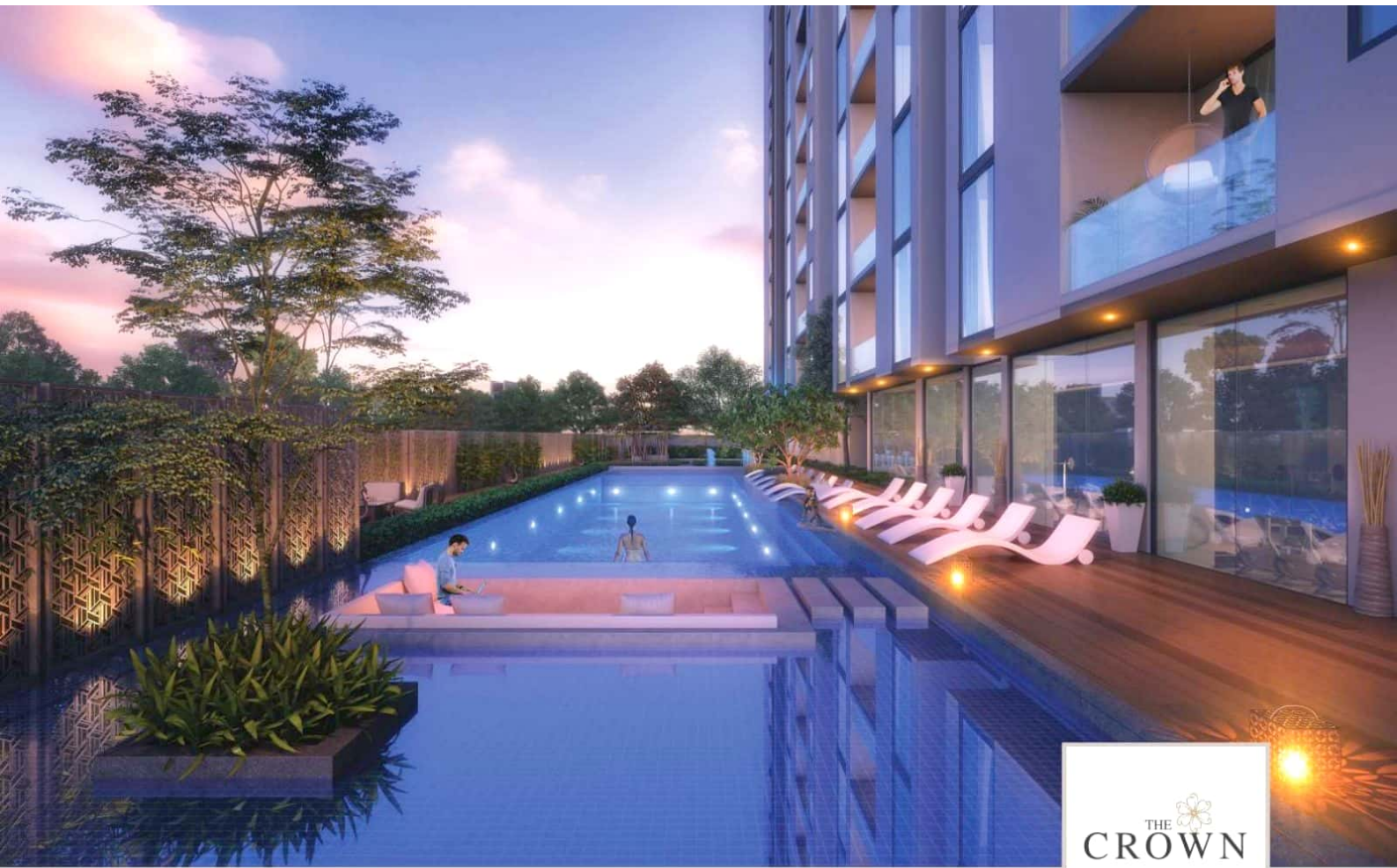


THE EXTERIOR: Dry Fountain Plaza



THE EXTERIOR: Arbor Lounge Cafe





THE EXTERIOR: Lap, Kids & Shallow Pool





THE INTERIOR: Grand Lobby Area





THE INTERIOR: Banquet Hall





THE INTERIOR: Cafeteria



THE INTERIOR: Home-Theatre





THE INTERIOR: Library



THE AMENITIES

OUTDOOR SPACES

- ▣ Temple
- ▣ Guardhouse/Gate feature
- ▣ Drop off
- ▣ Feature path
- ▣ Party lawn
- ▣ Pool sunken seat
- ▣ Swimming pool
- ▣ Poolside deck
- ▣ Kid's pool
- ▣ Water play/Musical fountain
- ▣ Kid's playground
- ▣ Tea corner
- ▣ Organic farm
- ▣ Reflexology garden
- ▣ Meditation/Yoga lawn
- ▣ Reading garden
- ▣ Outdoor dancing
- ▣ Fitness area/Senior citizens area
- ▣ Cricket practise
- ▣ Basketball court
- ▣ Golf putting area
- ▣ Green amphitheatre

- ▣ Garden walkway
- ▣ Multi-purpose lawn
- ▣ Sculpture court/gallery garden
- ▣ Feature path with sunken seat
- ▣ Gallery walk
- ▣ Open lawn
- ▣ Ramp to basement parking
- ▣ Visitors' parking

INDOOR SPACES

- ▣ Multi-purpose hall
- ▣ Pantry
- ▣ Aerobics/dance
- ▣ Gym
- ▣ Female spa
- ▣ Male spa
- ▣ Library/tuition room
- ▣ Kids play area
- ▣ Theatre
- ▣ Departmental store
- ▣ Table tennis/indoor games
- ▣ Billiards
- ▣ Indoor cafe
- ▣ Outdoor cafe

- ▣ Toilets
- ▣ Letter box
- ▣ Arrival hall
- ▣ Reception
- ▣ Office
- ▣ Salon
- ▣ Physically handicapped toilet

BASEMENT LEGENDS

- ▣ Badminton court
- ▣ Squash Court



THE CLUBHOUSE



Leisure Pool



Kid's Pool



Cafe



Party Lawn With Pool



Gymnasium



Meditation/yoga Room



Steam Bath



Basketball Pole



Jacuzzi



Mini Theatre



Amphitheatre



Arbor Lounge



Indoor Games Room
(chess/carom/
soccer Table)



Snooker Table/
table Tennis



Squash Court



Indoor
Badminton Court



Reflexology Zone



BLOCK PLAN





UNIT PLAN

3 BHK - TYPE A

Built-up Area - 1297 Sq. Ft. | Saleable Area - 1751 Sq. Ft.





UNIT PLAN

3 BHK - TYPE B

Built-up Area - 1286 Sq. Ft. | Saleable Area - 1736 Sq. Ft.



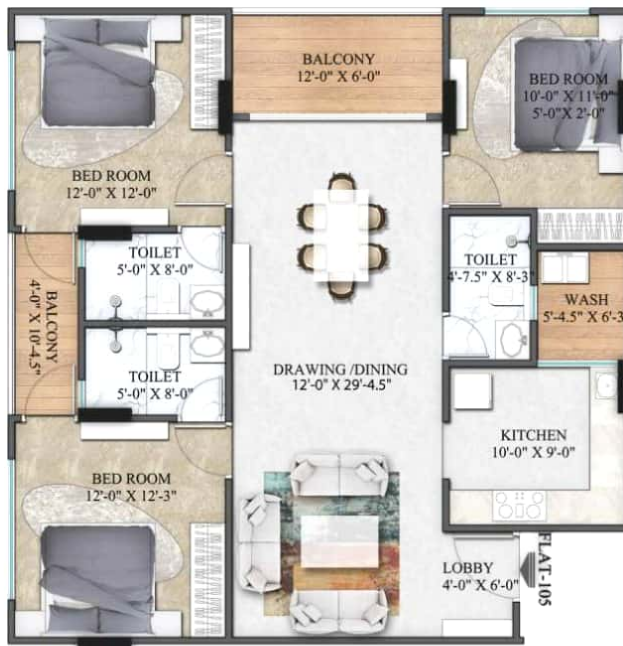


UNIT PLAN

3 BHK - TYPE C

Built-up Area - 1263 Sq. Ft. | Saleable Area - 1705 Sq. Ft.





UNIT PLAN

3 BHK - TYPE D

Built-up Area - 1238 Sq. Ft. | Saleable Area - 1671 Sq. Ft.



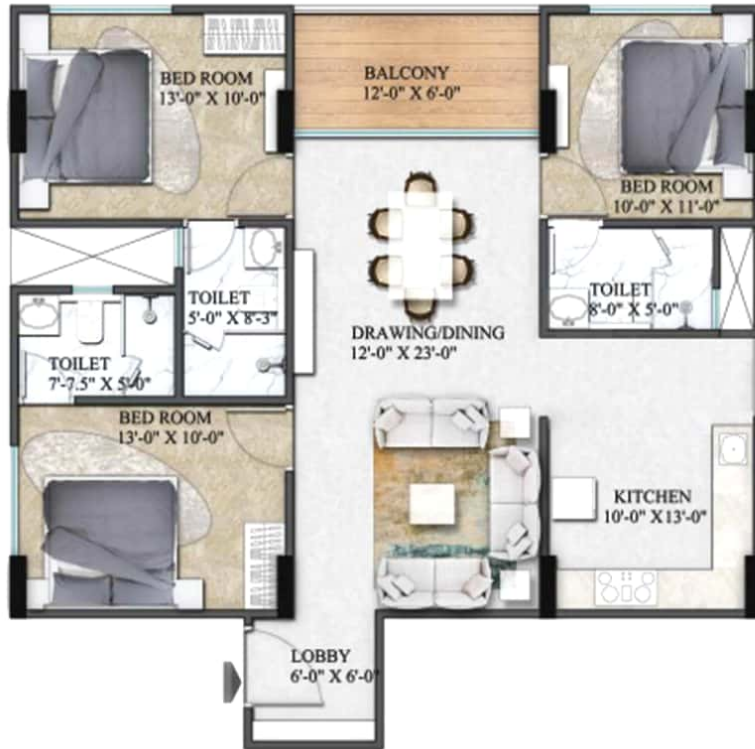


UNIT PLAN

3 BHK - TYPE E

Built-up Area - 1131 Sq. Ft. | Saleable Area - 1527 Sq. Ft.





UNIT PLAN

3 BHK - TYPE F

Built-up Area - 1095 Sq. Ft. | Saleable Area - 1478 Sq. Ft.





UNIT PLAN

3 BHK - TYPE G

Built-up Area - 1051 Sq. Ft. | Saleable Area - 1420 Sq. Ft.



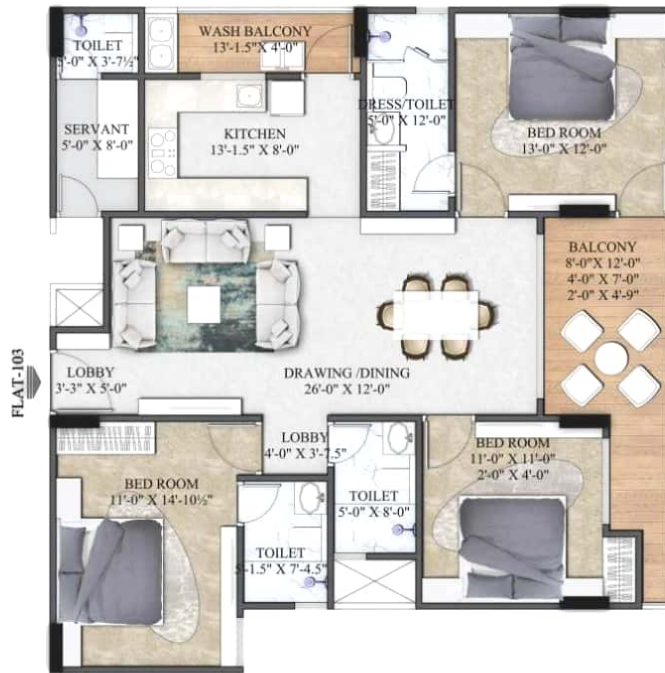


UNIT PLAN

3 BHK+SERVANT - TYPE A

Built-up Area - 1394 Sq. Ft. | Saleable Area - 1882 Sq. Ft.





UNIT PLAN

3 BHK+SERVANT - TYPE B

Built-up Area - 1395 Sq. Ft. | Saleable Area - 1883 Sq. Ft.





UNIT PLAN

4 BHK+SERVANT

Built-up Area - 2030 Sq. Ft. | Saleable Area - 2741 Sq. Ft.



SPECIFICATIONS

DRAWING/DINING

- Large size tile flooring
- 50mm thick designer door shutter with door frame and main entrance or equivalent
- High quality Euro profile aluminium/UPVC windows with two track system
- Acrylic emulsion paint on all internal walls & ceilings
- High-end electrical switches

BEDROOMS

- Large size tile flooring
- Veneered/laminated flush door with door frame, 35mm thick or equivalent
- High quality euro profile aluminium/UPVC windows with two track system
- Acrylic emulsion paint on all internal walls & ceilings
- High-end electrical switches

WASHROOM

- Anti-skid tiles for flooring
- Veneered/laminated flush door with door frame or equivalent
- Over the counter basin with granite top
- Separate wet area with glass partition
- Head shower
- Provision for geyser, exhaust fan
- C.P fitting of international quality brand
- Grid false ceiling

KITCHEN

- Modular kitchen
- Anti-skid tiles for flooring
- Acrylic emulsion paint in left over areas
- High quality Euro profile aluminium/UPVC windows with two track system
- Granite top counters
- Premium modular switches
- Gas hob, gas pipeline and gas detector
- Provision for geyser, exhaust fan & RO unit
- Washing machine point in utility area

BALCONY AND TERRACES

- Anti-skid tiles for flooring
- Glass railing with SS handrail

HOME AUTOMATION

- All major functional controls in living area
- Video door phone
- Panic button in kitchen/master bedroom
- Lighting automation in living and bedroom area
- Provision of expanding this system for complete automation



LANDSCAPING BY ONE

ONE
landscape art urbanism

ONE LANDSCAPE DESIGN LIMITED
WAN CHAI, HONG KONG

One is a well-known boutique design studio specializing in high-end contemporary landscape architecture, urban design, public art and environmental planning. With its head office in Hong Kong, One covers the geographical domains of China, Southeast Asia, India and Middle East. One's design philosophy draws inspiration from site's culture and texture and develops a big idea by integrating elements of architecture, landscape and art. In India One's portfolio includes clients like Tata (Mumbai), Godrej (Mumbai), Kalptaru (Mumbai), Runwal (Mumbai), Peninsula Land (Mumbai), Rohan Group (Pune), Arul Excello Group (Chennai), Mihra Group (Mumbai), Forum Group (Kolkata), Hiland Group (Kolkata) and Infinity Group (Kolkata). The core objective of 'One' is to create masterpieces in art by creating a seamless connection between indoor and outdoor environment and combining construction elements with design work.



THE
CROWN
IT BELONGS TO YOU

RERA No. RAJ/A/2017/038



Happy to help you!

Contact for more details

 www.keys90.com

 info@keys90.com

 7742821000, 9166329090

